

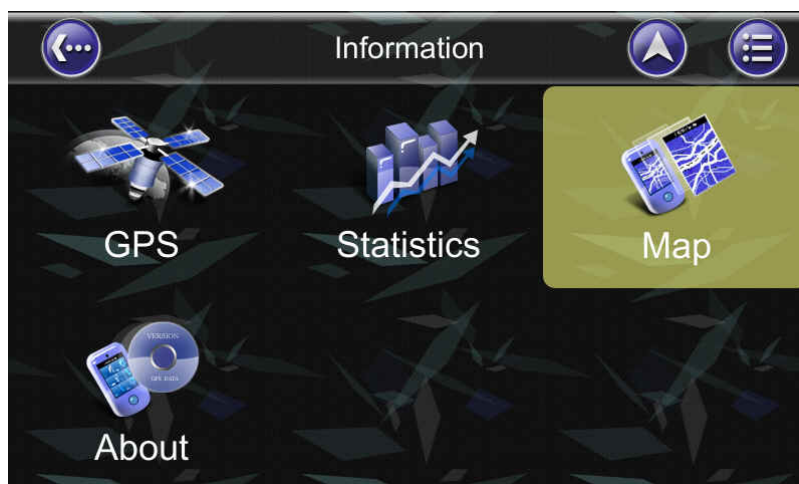
Map update Instructions

Before update	1
I. Under free update period	5
I-1. Condition 1: Direct Download	5
I-2. Condition 2: FUD Information Required	6
II. Out of free update period	8
III. Update Map to Navigation System	19

Before update

Step1. Prepare an empty micro SD card (>2G) for map update use.

Step2. Check the Map Version from the navigation software to see if your map is the latest or not. (Information > Map > Map Info > Source).

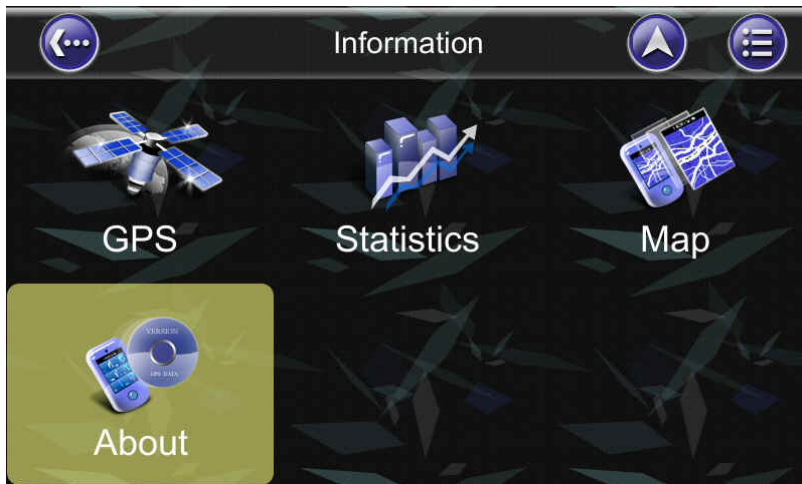




Step3. Check the Map Version from the navigation software to see if your map is the latest or not. (Information > Map > Map Info > Source).
 Check your FUD to see if your device is under free update period or not.
 Free Update period: 1 time free update within one year since FUD*.

(*FUD = First Used Date.)

- (1) FUD will be recorded in navigation system when first time the car speed is over 30 km/h lasting for 5 min. as well as positioned with GPS signals.
- (2) You can check your FUD record under the following path.
 (Information > About)



Application	Memory
Name	Car Navigator
Version	G55 R6.0.30.5.27
Date	10:41:13, May 27 2013
Thanks to	Anti-Grain Geometry
Device ID	R101 6012 36RS
Session	498727
Model	827C-ME
FUD(yyyy/mm/dd)	2010/09/10
Gyro	Provided

**If there is no FUD data in the “About” page, please drive the car for speed over 30 km/h and lasting for 5 min. Then the FUD data will automatically show up.

Step4. Connect to <http://service.e-lead.com.tw/toyota/gcc/> and the webpage will be shown as below:

Welcome!
Start to update your map

Please key in device ID & FUD.

Device ID: Submit

FUD: Submit Re-Fill

Step5. Please enter the Device ID and click [Submit].

Welcome!
Start to update your map

Please key in device ID & FUD.

Device ID: Submit

FUD: Submit Re-Fill

I. Under free update period

I-1. Condition 1: Direct Download

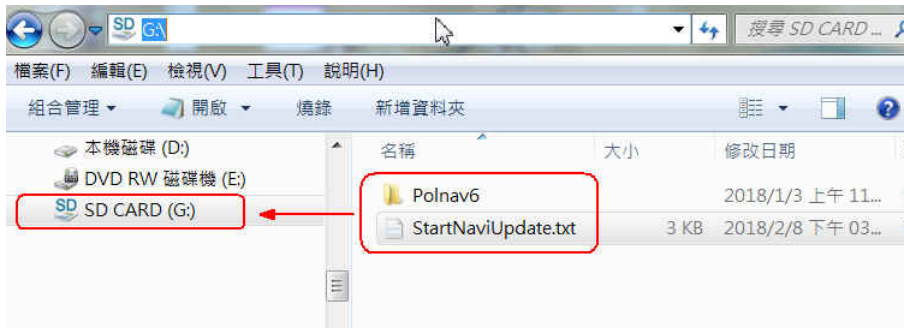
Step1. If your device is [under free update period], click the icon of your model to download the new map directly.



(Map ready to download)

Step2. New map will be downloaded as a compressed file, and the file name will be {Model Name}-update_{MapVersion}_{Date}.rar (for example, 827C-ME-update_NAVTEQ.010940_180124.rar).

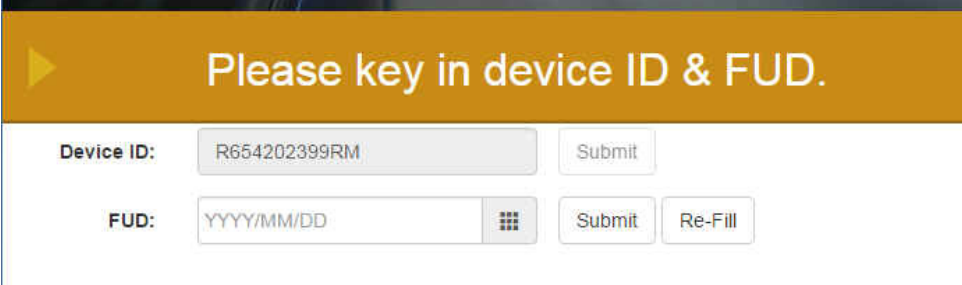
Step3. Un-compress the file and copy to the empty micro SD card (free space larger than 2GB). The content in the SD card should be look like as below:



Step4. Please go to [III. Update Map to Navigation System](#) and refer the update steps on the car device.

I-2. Condition 2: FUD Information Required

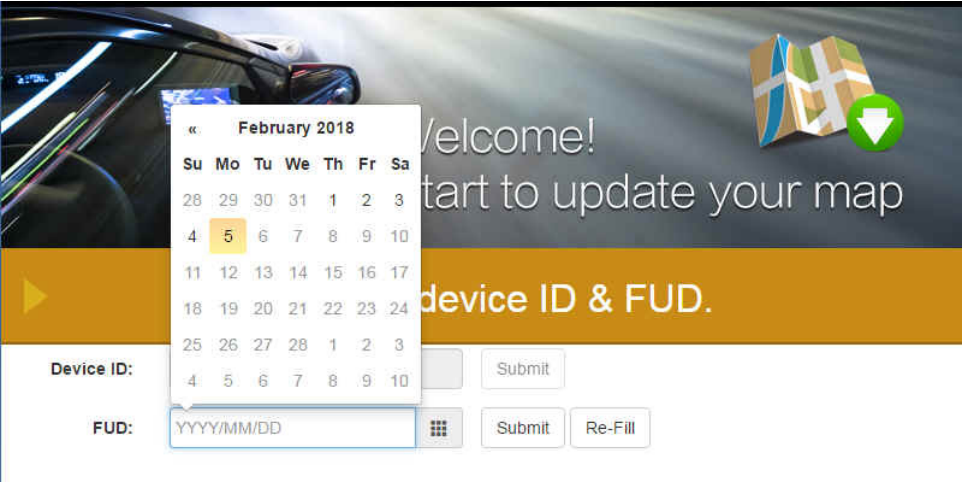
Step1. Please enter the FUD and click [Submit].



Please key in device ID & FUD.

Device ID:

FUD:



Please key in device ID & FUD.

Device ID:

FUD:

Calendar pop-up: February 2018

Su	Mo	Tu	We	Th	Fr	Sa
28	29	30	31	1	2	3
4	5	6	7	8	9	10
11	12	13	14	15	16	17
18	19	20	21	22	23	24
25	26	27	28	1	2	3
4	5	6	7	8	9	10

Step2. Please fill in your Name and Contact Mail, as well as attaching a photo of “About” page. (“Main Menu” > “Info” > “About”). The customer support team will reply you soon by Email.

Welcome!
Start to update your map

Contact Us

*First/Last Name:

*Contact Mail:

*Device ID:

*Attachment:
 The file size limit is 10 MB, allow file type are jpeg, jpg, png, gif.
 Note: Attach the photo of About page.

Remark:

[Home](#)

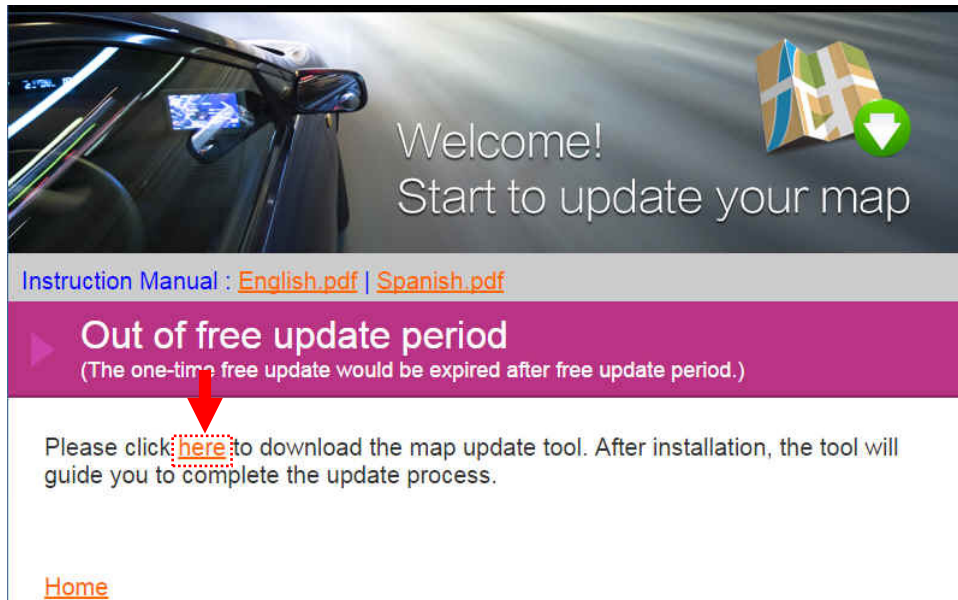
Please contact your local dealer/distributor if you encounter any problems during the update process.

Application	Memory
Name	Car Navigator
Version	G55 R6.0.30.5.27
Date	10:41:13, May 27 2013
Thanks to	Anti-Grain Geometry
Device ID	R101 6012 36RS
Session	498727
Model	827C-ME
FUD(yyyy/mm/dd)	2010/09/10
Gyro	Provided

(“About” page)

II. Out of free update period

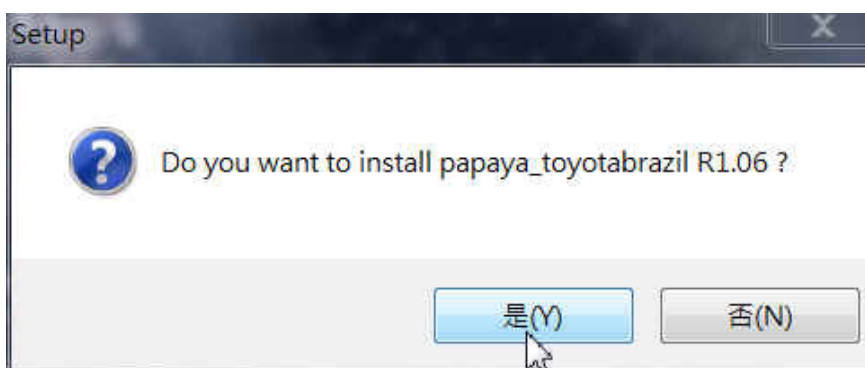
Step1. If your device is [out of warranty period], you'll enter this page: click link [here] on the website to download a PC tool for helping for license re-new and map update.

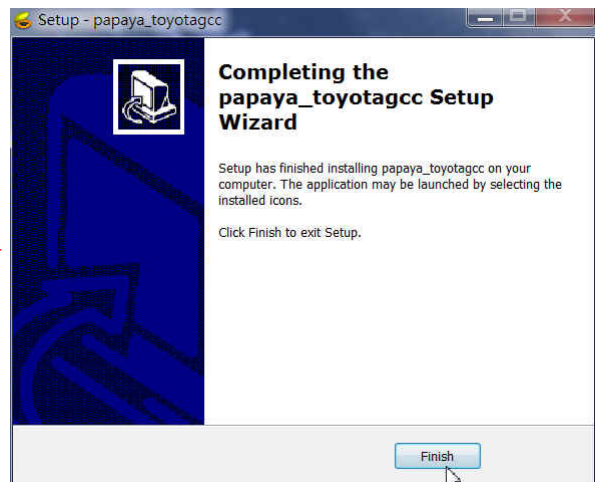
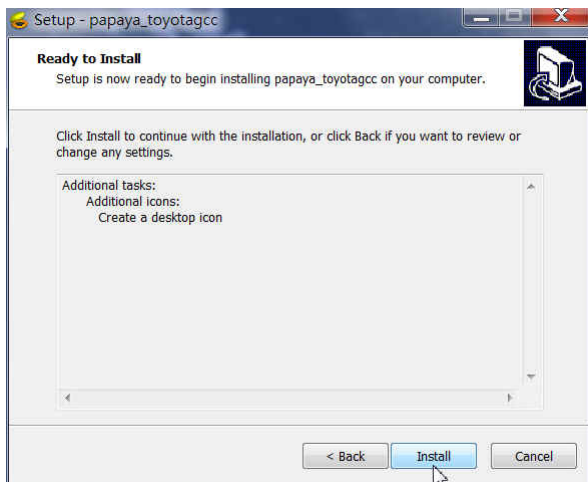
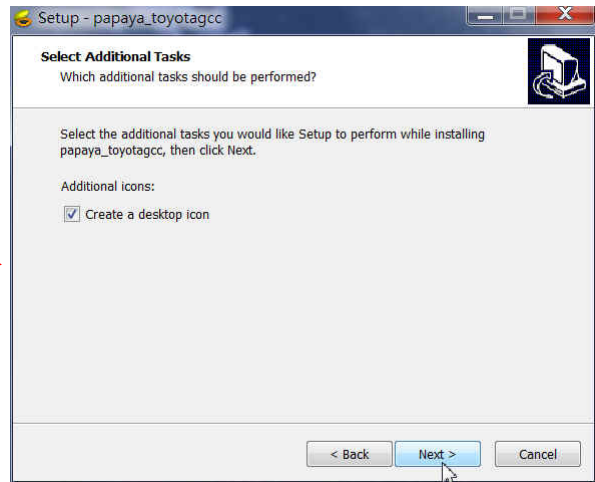
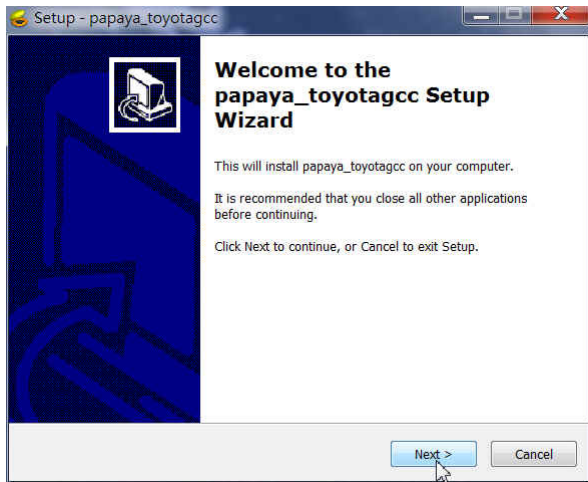


Step2. The PC Tool will be downloaded as a .exe file. (OS: WinXP/Win7/Win8)



Step3. Install the PC tool. Double click the .exe file. (Downloaded from the last step.)



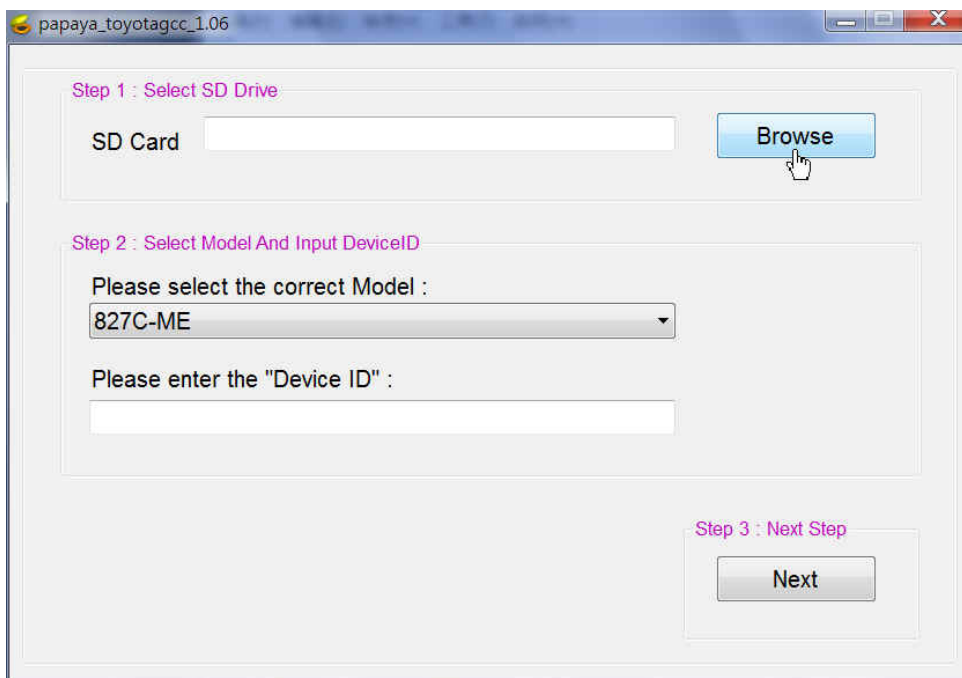


Step4. Launch the PC tool. Please double-click the update tool icon on the desktop. Click [Start].

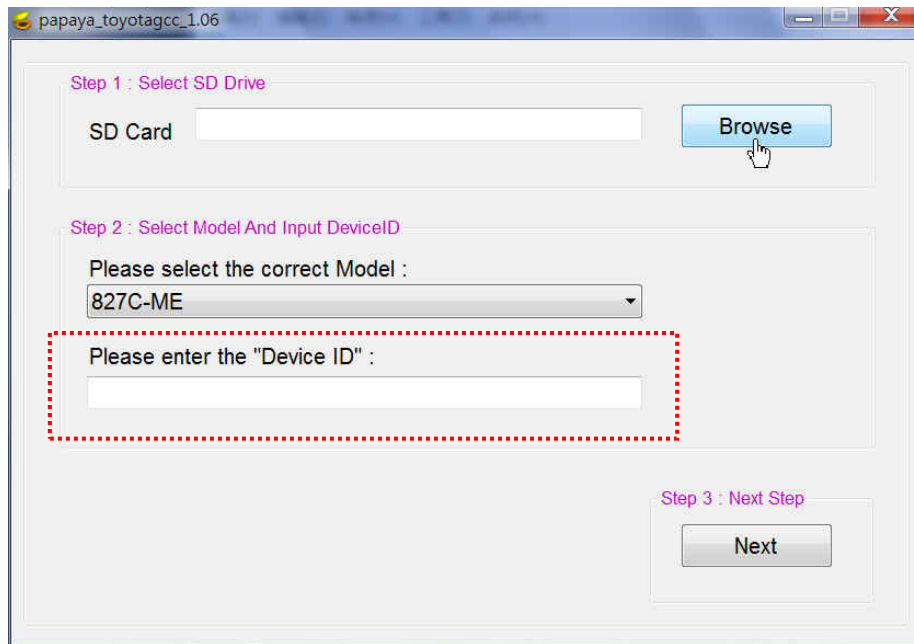




Step5. Browse the SD drive.

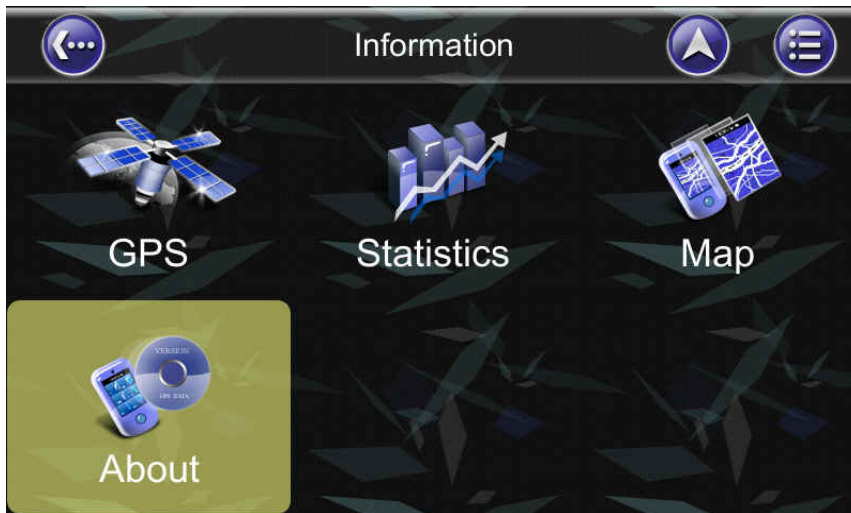


Step6. Choose the model and input your device ID*.



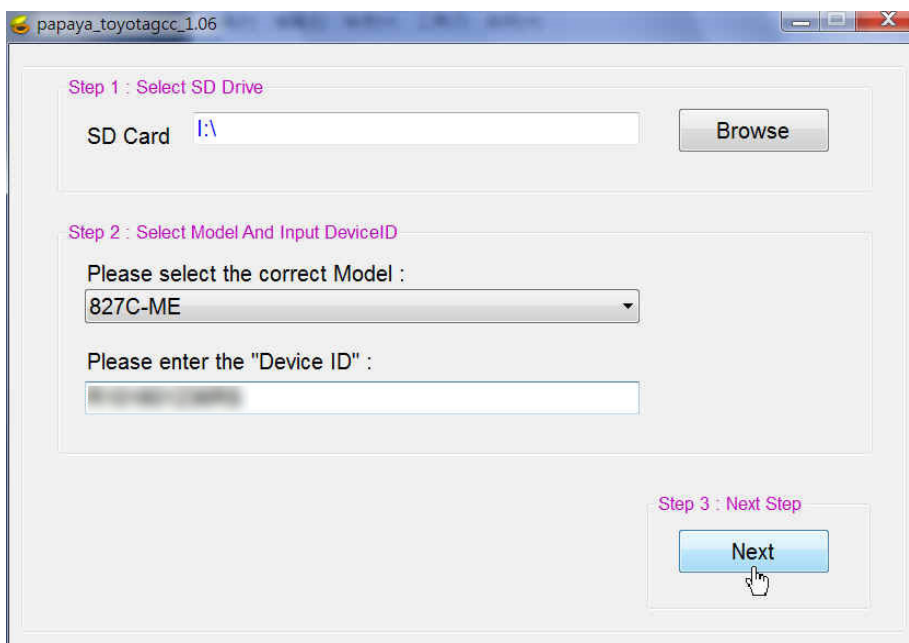
*You can check your [Model] and [Device ID] under the following path:
(Information > About)

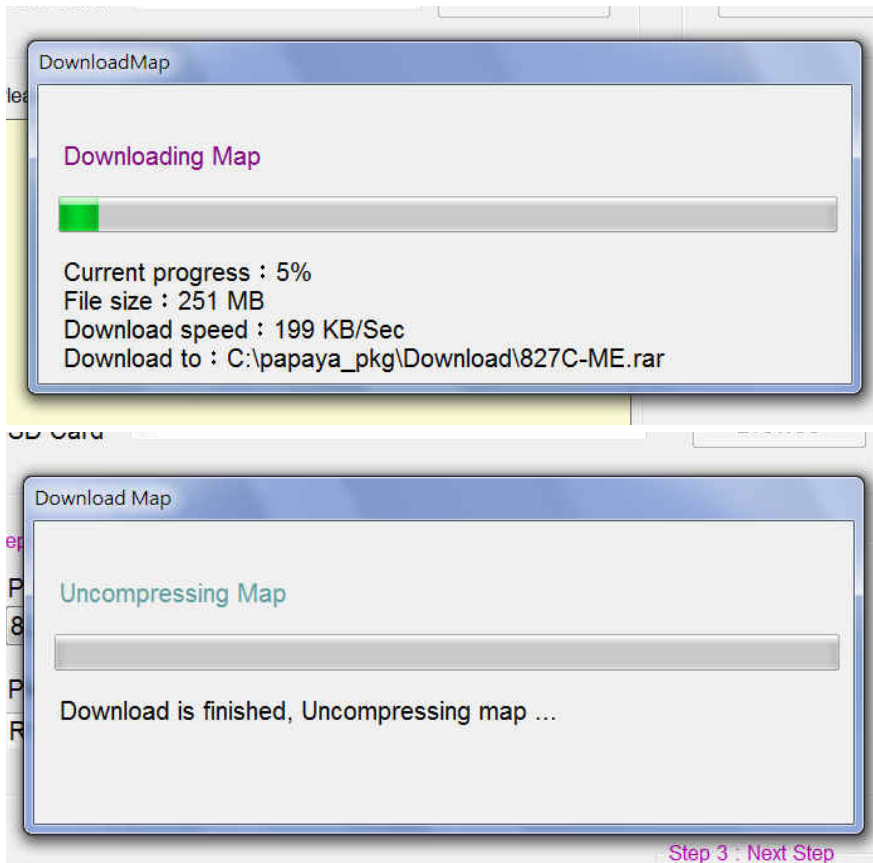




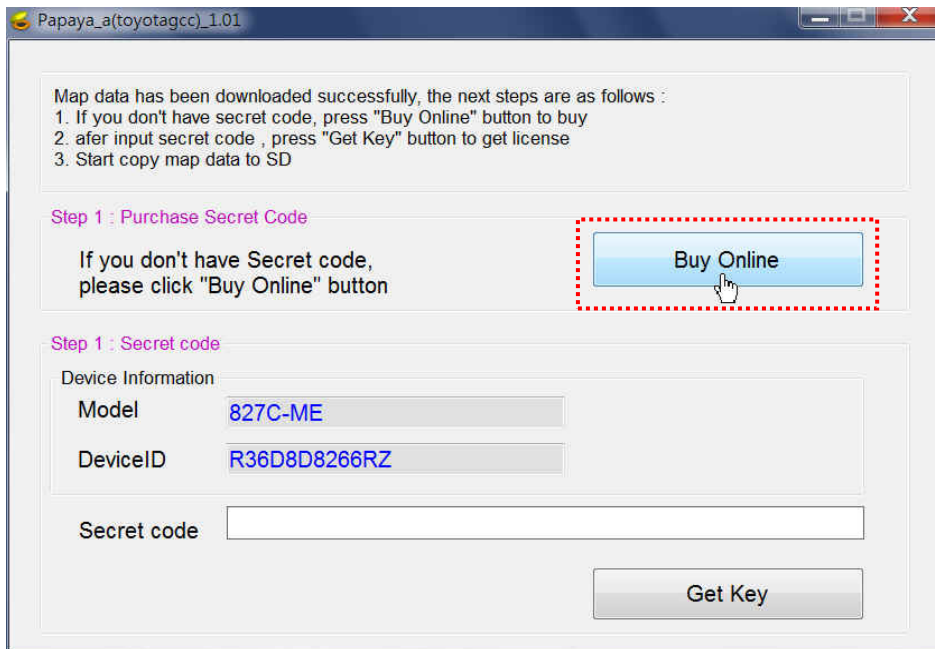
Application	Memory
Name	Car Navigator
Version	G55 R6.0.30.5.27
Date	10:41:13, May 27 2013
Thanks to	Anti-Grain Geometry
Device ID	R101 6012 36RS
Session	498727
Model	827C-ME
FUD(yyyy/mm/dd)	2010/09/10
Gyro	Provided

Step7. Click [Next] to start the map download and un-compressing.

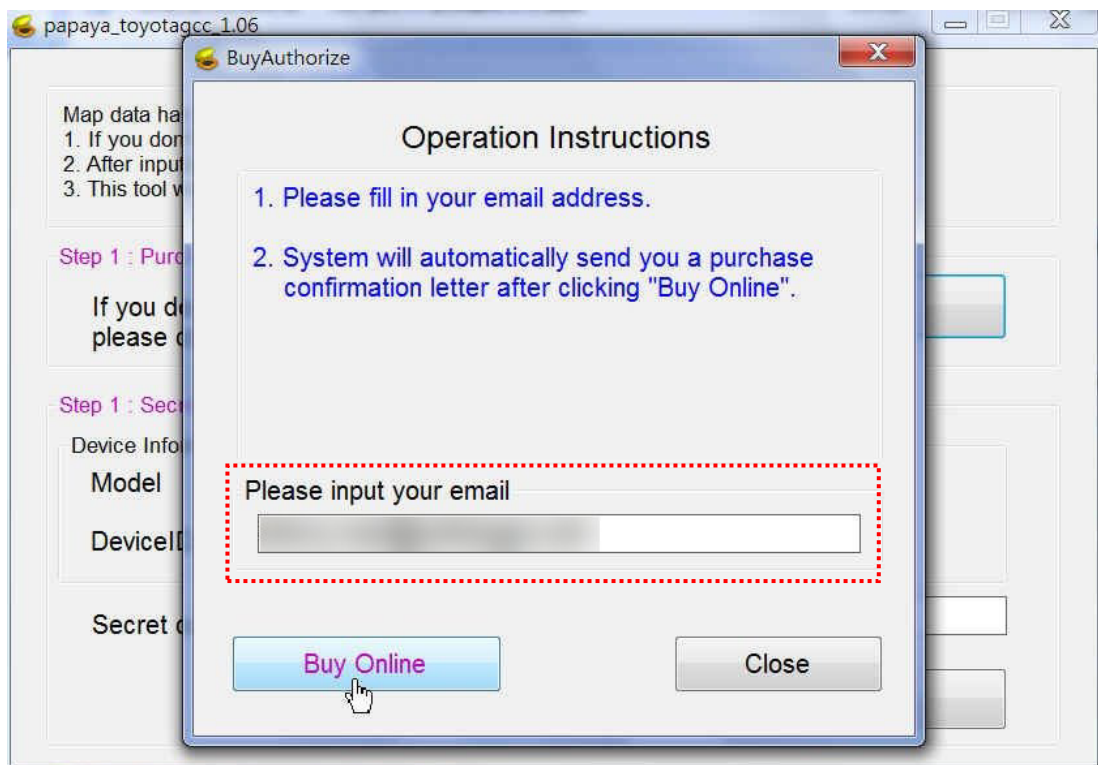




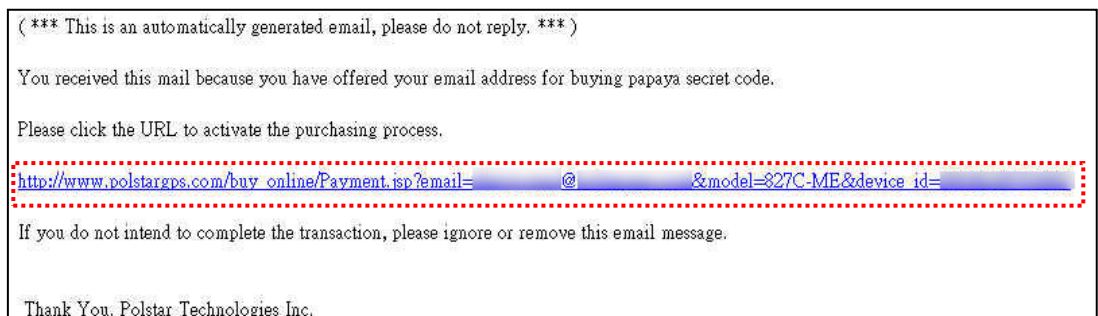
Step8. When map download and un-compressing are finished, the screen will be shown as below. Click [Buy Online].



Step9. Input your e-mail address, and click [Buy Online] to continue.



Step10. Click the purchase link from the mail sent by system.



Step11. Confirm the order. Click [Confirm].

POLSTAR

NAVIGATION MAP UPGRADE

Please confirm your order and proceed to finish the payment process by clicking on the "Confirm" button.

Your Information

E-mail : @
Model : 827C-ME
Device ID :

Ordering Item

Item : 1 year License
Price : NT (USDS)

Confirm

Step12. Enter your credit card number.

polstar

* Please fill in your credit card information.
* This page is powered by Neweb Technologies and secured by "256 bit SSL" encryption!
* [Issue Bank] and [CVC2, CVV2] are optional, and can not be applied to warrant.

Fill in credit card information	
Country	Taiwan
Currency	New Taiwan Dollar
Acquiring Bank	
Order Number:	
Amount:	NT\$
Credit Card Number:	- - - -
Expiry Date:	Month Year
Card Validation Code (CVC2): (or Card Verification Value (CVV2))	Illustration
SEND	

Neweb Payment Services



Copyright© 2013 Neweb Technologies Co., Ltd. All rights reserved.



Processing....



POLSTAR

NAVIGATION MAP **UPGRADE** 導航地圖升級

The transaction has been made successfully!

You will soon receive an email which contains papaya secret code.
Please go back to use papaya.exe and enter the secret code.

Copyright © 2013 Polstar Technologies, Inc. All rights reserved.

Step13. You will receive an email containing a secret code.

Purchase Secret Code - Order Confirmation - 1304261791

Polstar Technologies Inc. [fae@polstargps.com]

收件者: [REDACTED]

(***** This is an automatically generated email, please do not reply, *****)

Order Number: 1304261791

Email: [REDACTED]@[REDACTED]

Model: 827C-ME

Device ID: [REDACTED]

Thank You For Your Purchase.

This message contains your secret code for map update.

Please go back to use papaya.exe and enter the secret code listed below.

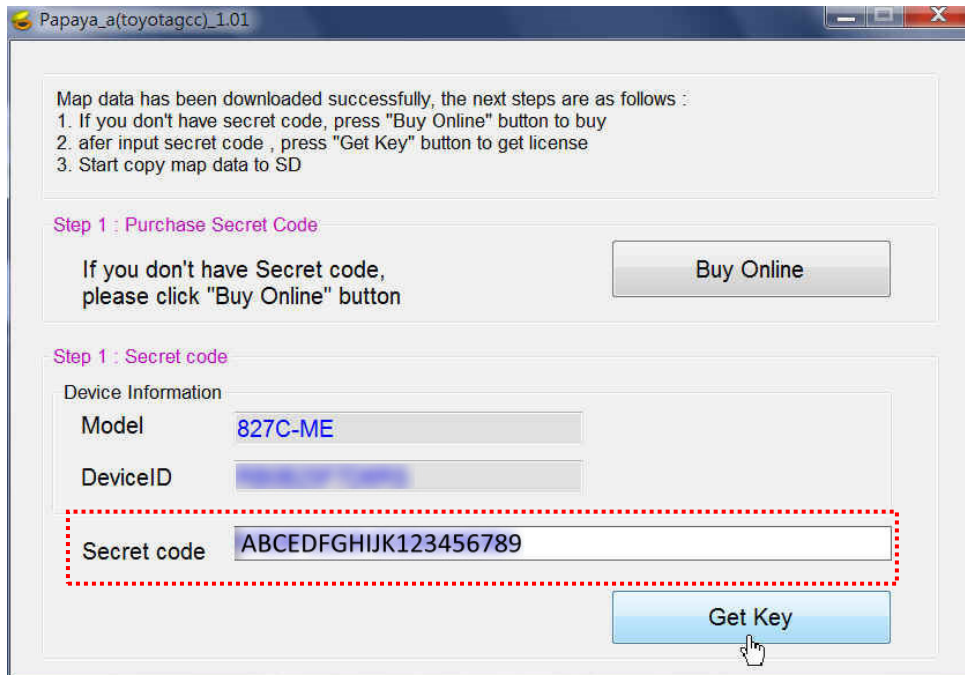
Secret Code: ABCDEFGHIJK123456789

This secret code is important! Keep it in a safe place, and keep it confidential.

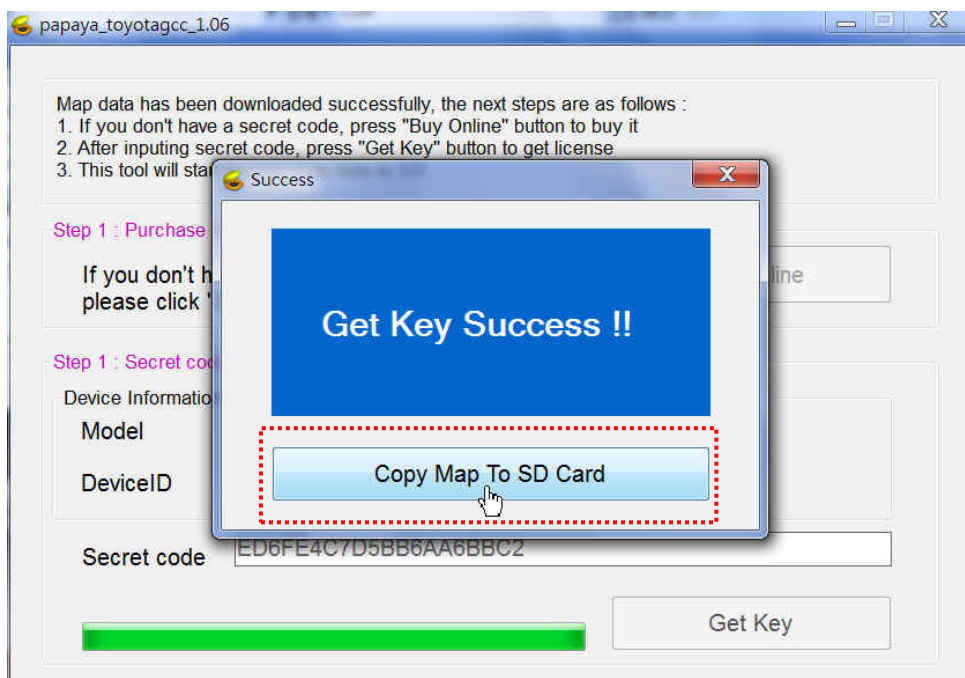
If you have any questions, contact us at support_team@polstargps.com.

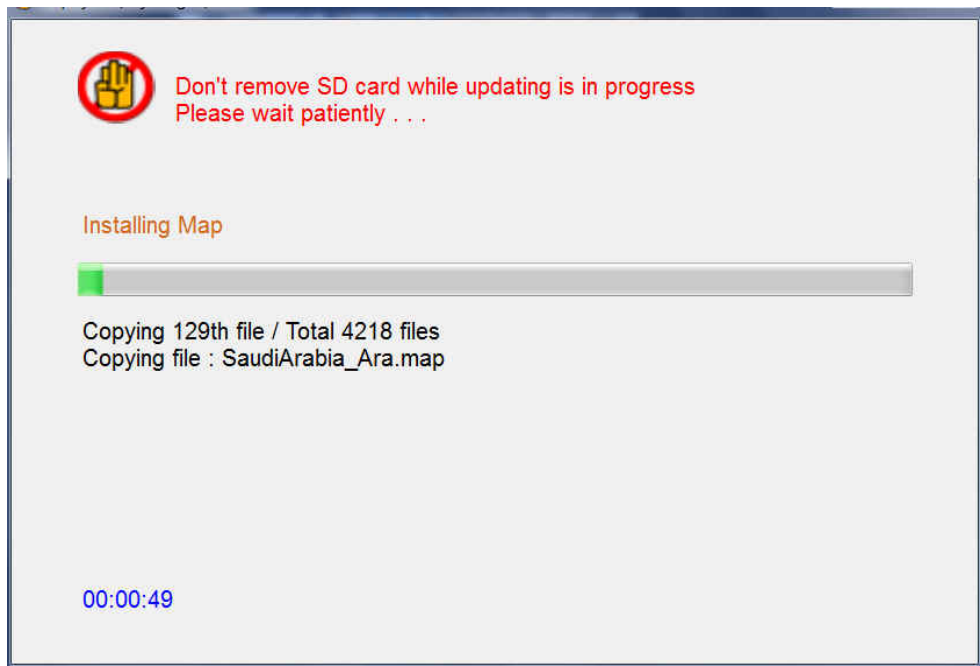
You can also hit us up on Facebook at @PolnavLiteTaiwan.

Step14. Go back to the PC tool. Input the secret code, and then click [Get Key] to get new license.

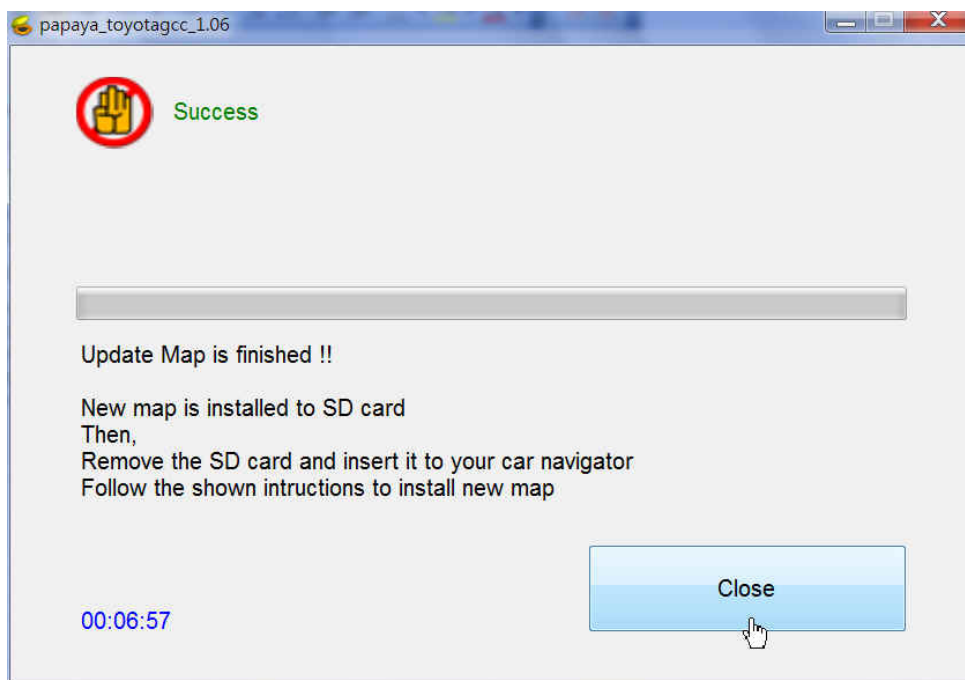


Step15. After getting new key successfully, please click [Copy Map To SD Card] to start to copy map to the SD card.





Step16. New license and map copy is finished.



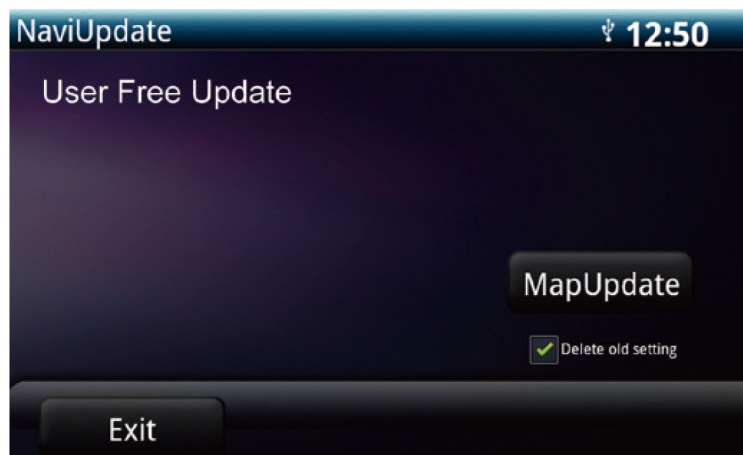
Step17. Insert the SD card into the navigation system, to start the map upgrade process. It will take about 10 min. to complete the map update process in this step.

III. Update Map to Navigation System

Step1. Insert the micro SD card into the Navigation System to start the map upgrade process.

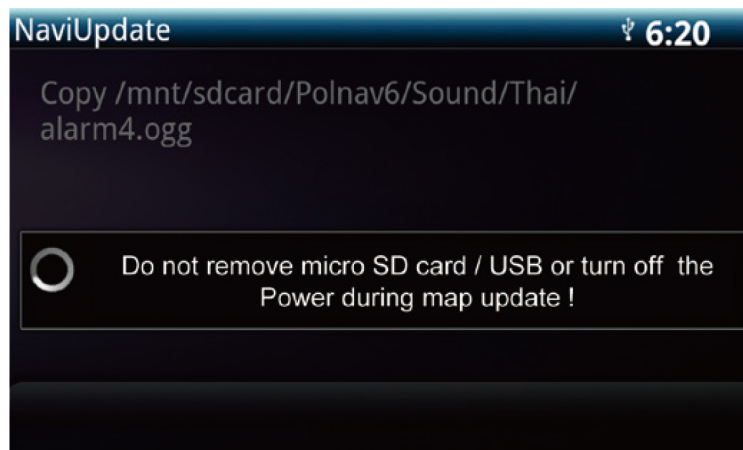
- After insert the map update micro SD card, the unit will pop up map update screen automatically.
- Press the **MapUpdate** button to start update process.

Warning: Do not turn off the power during the update process.

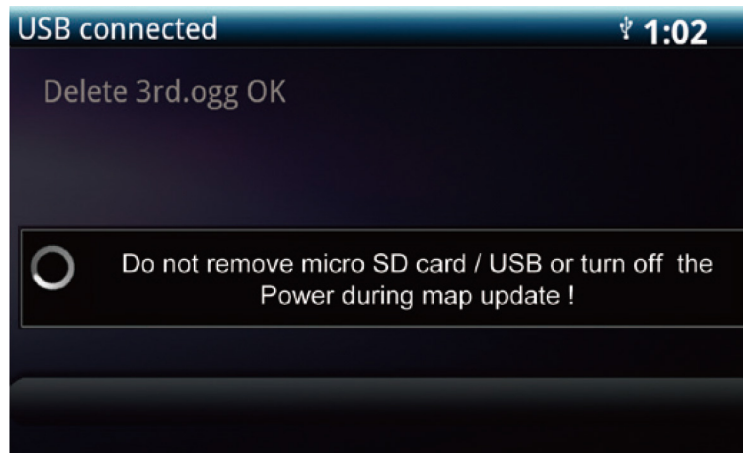


※ Select "Delete old setting", Navigation system will remove previous navigation settings after map update.

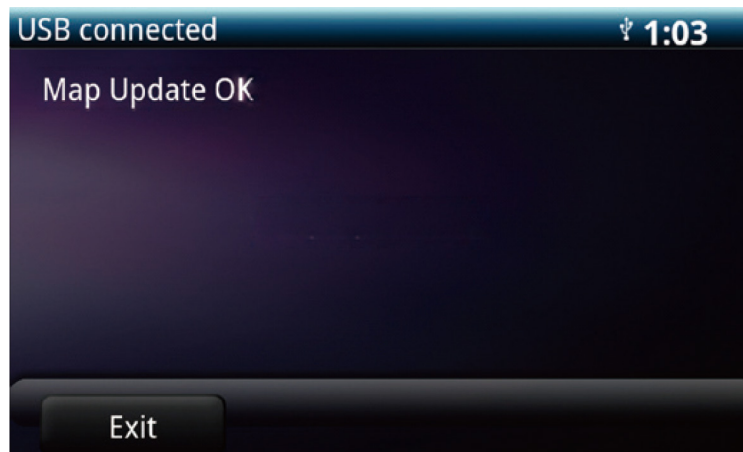
- After update process started, the new map data will be copied to the Navigation System.




- After new map copy process completed, the unit will empty the map data in the micro SD card.



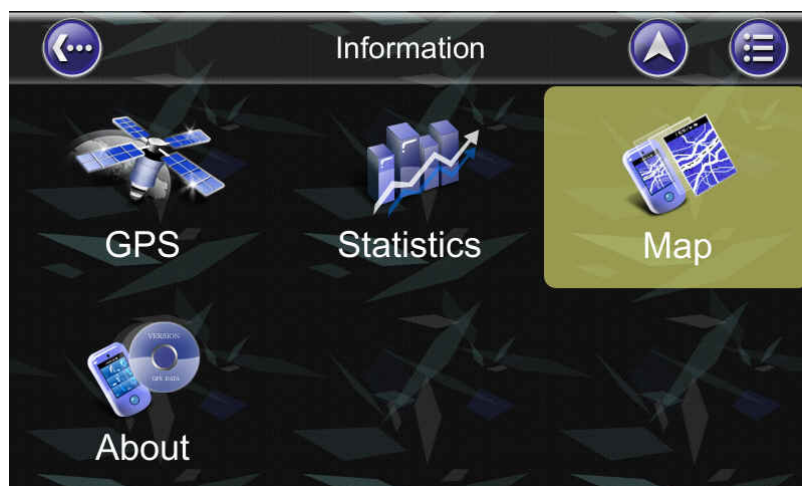
- When update process completed, the screen will show "Map Update OK".



Press  or simply remove the micro SD card to finish all the update process.

Step 2 Map version check after update.

- Check the map version under the following path.
(Information > Map > Map Info > Source)



Map Info		Region
Name	UAEOman_Eng	
Source	NAVTEQ.010520	
Date	2013/04/12	
MapCode	UAEOman@2013H1	

Note: After update, the version number shown here should be the same as version shown on the website.



9 inch model navigation



7 inch model navigation

Map Version: NAVTEQ.010520

[Download](#)

Map Version: NAVTEQ.010520

[Download](#)